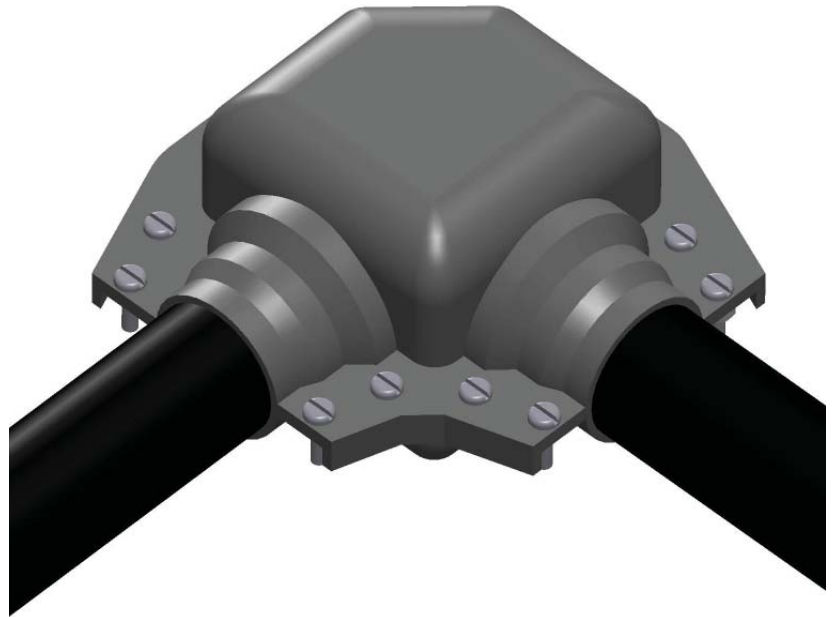


FAK-2 and FAK-2L Elbow Splice Kit Tubing Bundles

INSTALLATION PROCEDURES



The Heat Tracing Specialists®

FAK-2 and FAK-2L Elbow Splice INSTALLATION PROCEDURES

The FAK 2 and FAK-2L Elbow Splice Kits are designed to make a waterproof seal over the end of TubeTrace or ThermoTube where a 90° elbow is required. Review instructions prior to installation. Kit will make one splice connection. See separate instructions for details on splicing heating cables.

Receiving, Storing and Handling . . .

1. Inspect materials for damage incurred during shipping.
2. Report damages to the carrier for settlement.
3. Identify parts against the packing list to ensure the proper type and quantity has been received.
4. Store in a dry location.

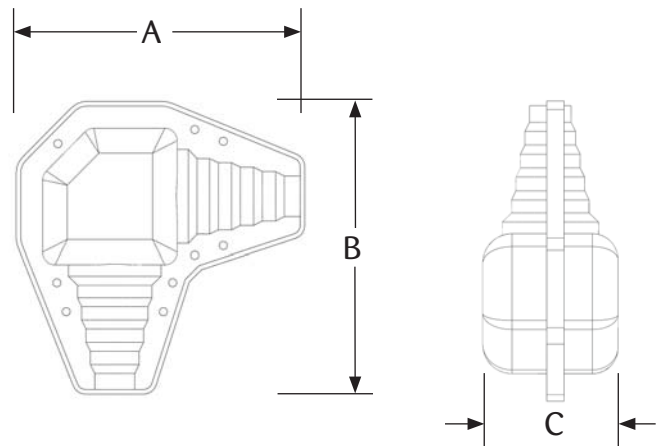
FAK 2 and FAK-2L Elbow Splice Kit . . .



Kit Content . . .

Item	Quantity	Description
1	1	90° Elbow Splice Cover (Top)
2	1	90° Elbow Splice Cover (Bottom)
3	9/11	PanHead S.S. Screws, #10-32 x 3/4" (FAK-2/FAK-2L)
4	9/11	KEPT S.S. Nuts, #10-32 (FAK-2/FAK-2L)
5	1	Heat Reflective Tape
6	1	Glass Fiber Tape
7	2	RTV Sealant Tube

Dimensions . . .



	A inch (mm)	B inch (mm)	C inch (mm)
FAK-2	8-3/4" (222 mm)	8-3/4" (222 mm)	3-5/8" (92 mm)
FAK-2L	9-5/8" (245 mm)	9-5/8" (245 mm)	3-3/4" (95 mm)

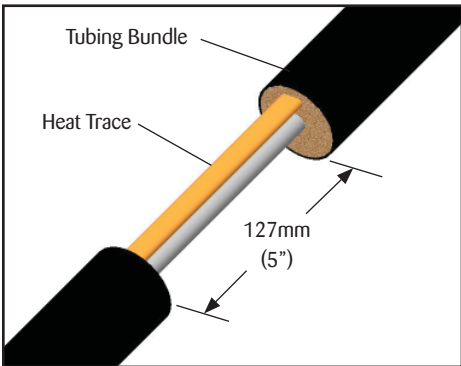
Installation Precautions . . .

- To minimize the potential for arcing and ground-fault protection. The National Electrical Code (NEC) and Canadian Electrical Code (CEC) require ground-fault protection of equipment for each branch circuit supplying electric heat tracing.
- Installation must comply with Thermon requirements and be installed in accordance with the NEC, CEC, or any other applicable national and local codes.
- Component approvals and performance ratings are based on the use of Thermon specified parts only. User supplied power connection fittings must be listed or certified for intended use.
- De-energize all power sources before opening enclosure.
- Keep ends of heating cable and kit components dry before and during installation.
- Individuals installing these products are responsible for complying with all applicable safety and health guidelines. Proper personal protective equipment, or PPE, should be utilized during installation. Contact Thermon if you have any additional questions.

Tools Required . . .



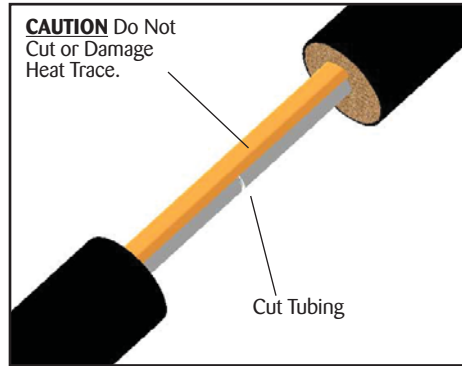
FAK-2 and FAK-2L Elbow Splice INSTALLATION PROCEDURES



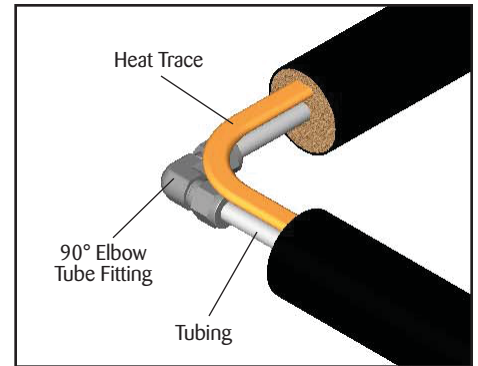
1. Remove approximately 127mm (5") of outer jacket and insulation from tubing bundle.



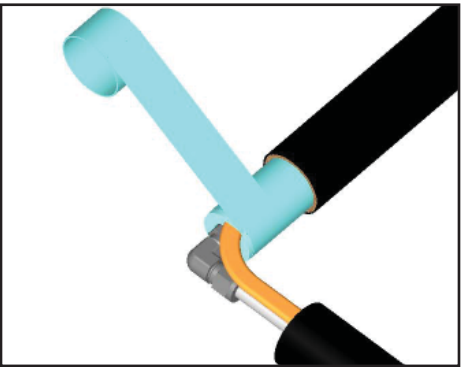
Do not cut or damage the heat trace.
(Found on TubeTrace SE/ME bundles)



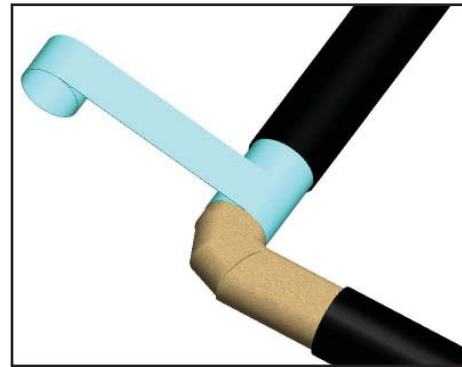
2. Cut tubing being careful not to damage or cut the heating cable. For splicing two tube bundles, heater cable must be spliced. Order the appropriate Heat Trace Splice Kit separately.



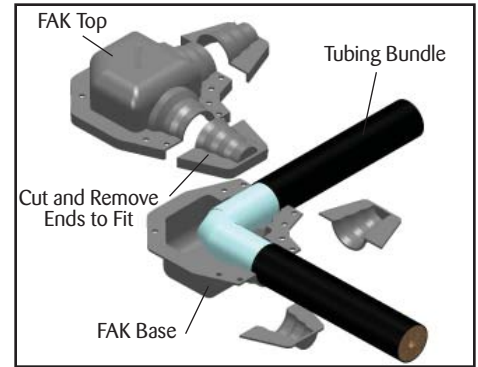
3. Cut 1/2" (13mm) off ends of tubing and make 90° elbow tube fitting connections, provided by others.



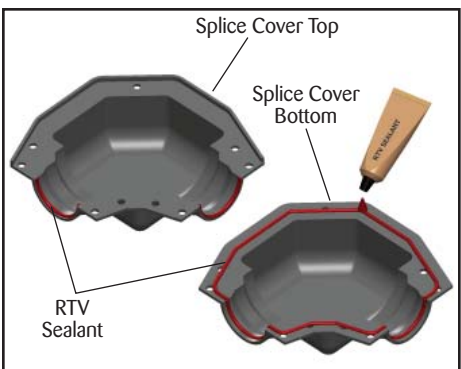
4. Wrap tube and heat trace with 1 pass of reflective tape (25% overlap).



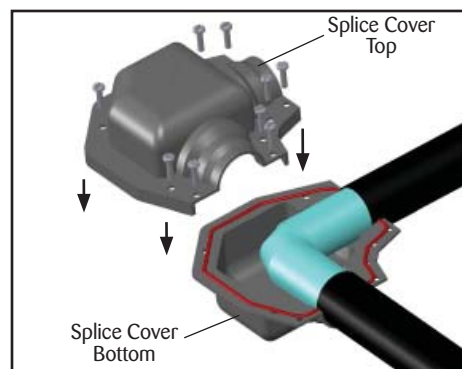
5. Wrap with 3 passes of glass fiber tape (50% overlap), or until fiber tape is equal to original bundle insulation thickness. Complete with an additional pass of heat reflective tape.



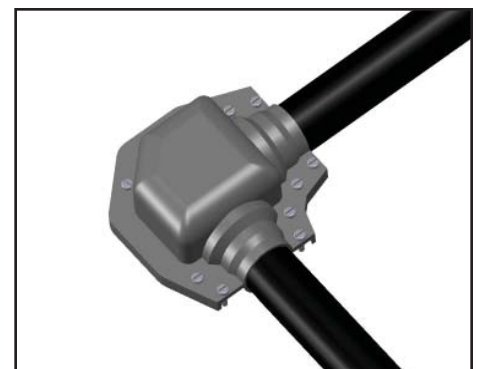
6. Cut top and bottom splice cover ends to match outside diameter of tubing bundle.



7. Form a gasket by applying RTV sealant to bottom half of splice cover and along radius of upper half.



8. Fit tubing bundle to bottom half of cover and install top half. Screw down firmly. Inspect ends of tubing splice cover for snug fit. Apply additional RTV sealant where needed.



9. Completed FAK-2 kit.





THERMON . . . The Heat Tracing Specialists®

100 Thermon Dr. • PO Box 609 • San Marcos, TX 78667-0609

Phone: 512-396-5801 • Facsimile: 512-396-3627

1-800-820-HEAT • In Canada call **1-800-563-8461**

ISO 9001
REGISTERED

Specifications and information are subject to change without notice. Form PN50049-0612

For the Thermon office nearest you
visit us at . . .
www.thermon.com