

Systems Accessories

Thermon Heat Tracing Cables

Product Specifications

Application . . . Freeze Protection and Process Temperature Maintenance

The following information relates to power connection kits, end termination kits and common installation accessories used with Thermon BSX™, RSX™, KSX™, TSX™, HTSX™, VSX™, FP and HPT heating cables.



Terminator NH... is designed to fabricate power connections, in-line/T-splice connections or for making end terminations. The Terminator NH is suitable for use in hazardous areas (EEx e T6/T4), harsh industrial environments and has a IP66 rating. The upfront positioning of the terminal block permits easy access during assembly and for future routine maintenance.

The Terminator ZP kit includes; Pipe-mounted expediter with suitable grommet, Junction box with M25-B-IND blind plug, Four 6-mm² line/load terminals, Terminals rated to 22 amps (T6 85°C) or 46 amps (T4 135°C), Maximum voltage rating of 750 Vac, Wallmount version is available.

Product Reference Legend:

ZP-L-XP RSX, TSX, VSX
ZP-S-XP BSX, HTSX, KSX, FP, HPT



Terminator ZP... is designed to fabricate power connections, in-line/T-splice connections or for making end terminations. The Terminator ZP-XP is suitable for use in hazardous areas (EEx e T6/T4), harsh industrial environments and has a IP66 rating. The upfront positioning of the terminal block permits easy access during assembly and for future routine maintenance.

The Terminator ZP kit includes; Pipe-mounted expediter with suitable grommet, Junction box with M25-HPT/PWR-Exe power gland and M25-B-Exe blind plug, Four 6-mm² line/load terminals, Two 6-mm² earth terminals, Terminals rated to 22 amps (T6 85°C) or 46 amps (T4 135°C), Maximum voltage rating of 750 Vac, Wallmount version is available.

Product Reference Legend:

ZP-L-XP RSX, TSX, VSX
ZP-S-XP BSX, HTSX, KSX, FP, HPT



Terminator ZL... is designed to provide visual indication of an energized heating circuit. The kit may be utilized as a power connection or an end termination kit. Electrical connections are made in terminal blocks utilizing nickel-plated copper terminals to ensure corrosion-free electrical integrity.

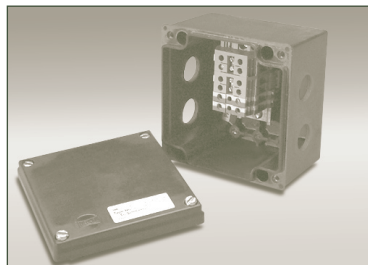
The Terminator DL kit includes; IP66 rated junction box, yellow LED indicating lamp, four 6-mm² line/load terminals, two 6-mm² earth terminal, pipe-mounted fitting, heater cable grommet.

Product Reference Legend:

ZL-L-XP RSX, TSX, VSX
ZL-S-XP BSX, HTSX, KSX, FP, HPT



PCA NH4 & NH5... rugged, impact-resistant nonmetallic junction boxes for use in non-hazardous industrial environments and have an IP66 degree of protection. The boxes are suitable for temperatures ranging from -20°C to 70°C and have a maximum voltage rating of 690 Vac.



Thermon has a range of suitable Exe approved junction boxes. These boxes are rugged, impact-resistant nonmetallic junction box suitable for use in harsh industrial environments and has an IP66 degree of protection. The box is available in two versions: **JB-K-0-M25-IND** for nonhazardous areas (grey, bearing the CE mark) and **JB-K-0-M25-Ex** for hazardous areas (black, EEx e T6/T4 approved).

The JB-K-0-M25 includes; exposure temperatures to 90°C, stainless steel screws (captured) and inserts, four M25 threaded openings (glands and/or blind plugs available separately), four 6-mm² line/load terminals, two 6-mm² earth terminals, terminals rated to 22 amps (T6 85°C) or 46 amps (T4 135°C), maximum voltage rating of 750 Vac, box dimensions of 126 x 126 x 95 mm.



B-4, B-10, B-21... stainless steel attachment bands for securing Thermon JB-K/XP Plus-SX and VIL/XP Plus nonmetallic kits and XP-1-140X140 mounting brackets to pipes.

B-4... for pipes up to 100 mm (4") diameter
B-10... for pipes up to 250 mm (10") diameter

B-21... for pipes up to 530 mm (21") diameter

ABA-25... for pipes up to 25 mm (1/2") diameter

ABA-40... for pipes up to 40 mm (1") diameter

XP Plus-LN-Tool... for tightening the locknuts of the JB-K/XP Plus-SX and VIL/XP Plus kits. Tool is recommended to ensure enclosure is properly secured to the pipe-mounted XP Plus expediter.

Terminator-LN-Tool... for tightening the locknuts of the Terminator ZP-XP and ZL-XP kits. Tool is recommended to ensure enclosure is properly secured to the pipe-mounted expediter.



THERMON . . . The Heat Tracing Specialists®
www.thermon.com

European Headquarters
 Boezemweg 25 • PO Box 205
 2640 AE Pijnacker • The Netherlands
 Phone: +31 (0) 15-36 15 370

Corporate Headquarters
 100 Thermon Dr. • PO Box 609
 San Marcos, TX 78667-0609 • USA
 Phone: +1 512-396-5801

For the Thermon office nearest you
 visit us at . . .
www.thermon.com



Systems Accessories

Thermon Heat Tracing Cables

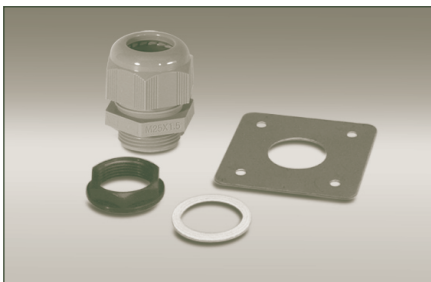
Product Specifications

Cable End Termination Kits, Attachment Tapes and Miscellaneous Items . . .



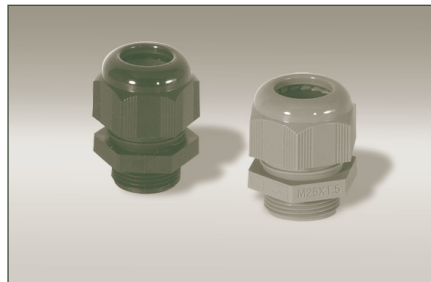
PETK......circuit fabrication kit for use in hazardous and industrial areas. Terminates SX heating cables in a Terminator, JB-K/XP Plus, JB-K-0-M25, JB-K-1, JB-K-2 (or other) junction box. Kit includes a power boot, end cap, over end cap, RTV adhesive, yellow/green earth wire sleeve and the necessary wire pins/lugs.

RSX, TSX, VSX..... PETK-1
 BSX, KSX, HTSX..... PETK-2
 FP, HPT..... PETK-3



IEK-SX......Insulation entry kit for use in (non) hazardous locations that protects and seals the heating cable while penetrating insulation cladding.

BSX.....IEK-SXM
 KSX, HTSX, FP, HPT.....IEK-SXS
 RSX, TSX, VSX.....IEK-SXL



M25-SX-Ex.......Ex e approved nonmetallic gland for use with JB-K-0-M25 junction boxes.

M25-SX-IND.......nonmetallic gland for use with JB-K-0-M25 junction boxes

BSX..... M25-SXM-...
 KSX, HTSX, FP, HPT..... M25-SXS-...
 RSX, TSX, VSX..... M25-SXL-...



M25-PWR-IND, M25-B-IND, M25-LN-IND......non-metallic gland and plug for use in threaded openings of JB-K/XP Plus-120-IND and JB-K-0-M25-IND junction boxes. (May also be used in JB-K-1 and JB-K-2 by utilising M25-LN-IND locknut.)

M25-PWR-IND......power gland is suitable for securing power cables with diameters between 11 and 18 mm.

M25-B-IND......blind plug and sealing washer.

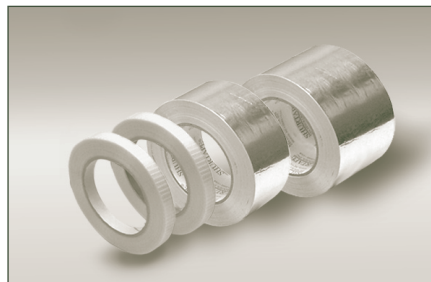
M25-LN-IND......locknut for securing M25 glands in JB-K-1 and JB-K-2 boxes.



M25-HPT/PWR-Exe, M25-B-Exe......Ex e approved nonmetallic gland and plug for use with Terminator, JB-K/XP Plus-_-Ex and JB-K-0-M25-Ex junction boxes.

M25-HPT/PWR-Exe......power gland is suitable for securing power cables with diameters between 8 and 17 mm.

M25-B-Exe......blind plug.



FT-1L, FT-1H......fixing tape for attaching heating cable to piping every 30 cm or as required by code or specification.

AL-20L, AL-20H, AL-30L, AL-30H......aluminium tapes for continuous (longitudinal) covering and/or attaching cable to piping and/or equipment.

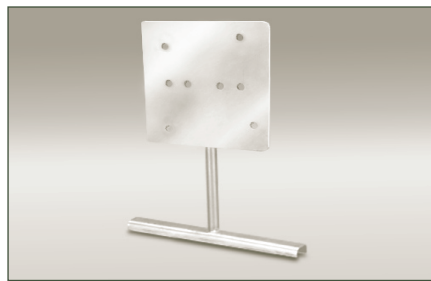
Item Number	Max. Temp. (Exposure)	Min. Temp. (Installation)	Size (mm x m)
FT-1L	93°C	5°C	12 x 33
FT-1H	260°C	-40°C	12 x 33
AL-20L	65°C	5°C	50 x 45
AL-20H	150°C	-5°C	50 x 55
AL-30L	65°C	5°C	76 x 45
AL-30H	150°C	-5°C	76 x 55



SK-SX-Oj......Ex e approved under-the-insulation repair and splice kit for overjacketed SX cables. Kit includes stainless steel shells, screws, grommets, RTV adhesive/sealant, insulation tape and the necessary wire pins/lugs.



CL......vinyl-based peel-and-stick caution labels are intended for direct exposure to industrial environments. Electrically heated pipelines and vessels should be clearly identified at frequent intervals along the pipeline or vessel. Caution labels should be placed at 3 to 6-m intervals or as required by code or specification. Additional languages are available; contact Thermon.



XP-1-140X140......stainless steel (type 304) mounting bracket designed for mounting Thermon junction boxes (and thermostats) directly to the pipework. The bracket is easily secured to the pipe using B-4, B-10 or B-21 attachment bands. The XP-1 is predrilled for use with the JB-K-0, JB-K-1 and JB-K-2, has plate dimensions of 140 x 140 mm and utilises a 110-mm standoff.

