



PRODUCT SPECIFICATIONS

Terminator™ / FAK Termination Kits

FOR TUBETRACE® ELECTRICALLY HEATED TUBING

Terminator kits are approved for use in ordinary (non-classified) areas and hazardous (classified) areas. The Terminator kits have a maximum exposure temperature rating of 482°F (250°C) with a minimum installation temperature of -76°F (-60°C). The molded FAK kits have a maximum temperature rating of 180°F (82°C) with a minimum installation temperature of -4°F (-20°C).

The following Terminator Kits can be used with the molded FAK Kits shown below. These combination kits must be ordered together!

TERMINATOR / FAK COMBINATION CONNECTION KITS



DP/FAK and ZP/FAK Power Connection/Splice Kits are designed to fabricate power connections, in-line/T-splice connections or for making end terminations on TubeTrace with electric heat tracing. (PETK/SCTK termination kit required, order separately)



Surface Mounted Bulkhead Entry Kit is designed to provide an effective transition when TubeTrace must pass through an enclosure or shelter wall.

FAK-1
(fits O.D. 1-1/8" to 2-1/2" bundles)



DS/DE/FAK & ZS/ZE/FAK In-Line Splice/End Kits are designed to fabricate outside-the-insulation in-line splices or end terminations



90° Large Elbow Transition Kit is designed to make a waterproof seal over TubeTrace elbow splices.

FAK-2L
(fits O.D. 1-7/8" to 3-1/2" bundles)



DL/FAK and ZL/FAK Indicating Light Kits are designed to provide visual indication of an energized heating circuit. The kit may be utilized as a power connection or an end termination kit. (PETK/SCTK termination kit required, order separately).



In-Line Splice Kit is designed to make a weather proof seal over TubeTrace in-line splices.

FAK-4
(fits O.D. 1-1/8" to 2-1/2" bundles)

FAK-4L
(fits O.D. 1-7/8" to 3-1/2" bundles)



Order Separately
PETK circuit fabrication kit includes a power boot, end cap, RTV adhesive.



Tee Splice Kit is designed to make a waterproof seal over TubeTrace Tee splices.

FAK-5
(fits O.D. 1-1/8" to 2-1/2" bundles)

FAK-5L
(fits O.D. 1-7/8" to 3-1/2" bundles)

Notes

- Stand alone FAK Kits are also available for mounting thermostats and temperature sensors or for unheated ThermoTube® and SafeTrace® bundles.
- Terminator and FAK combination kits must be ordered together.
- DE-B and ZE-B beacon lights available with FAK-1 kits only
- All tube fittings to be provided by others..

PRODUCT REFERENCE LEGEND

TERMINATOR DP/FAK-4L

Area Classification

D = Division 2 and Zone 2 Areas
Z = Zone 1 Areas

P = Power Connection
S/E = Splice/End
B = Beacon Circuit Light³
L = End of Circuit Light

Kit Type

FAK = Field Assembly Kit

1 = Surface Mounted Bulkhead Entry
2L = Large Elbow Transition
4 = In-line Splice
4L = Large In-line Splice
5 = Tee Splice
5L = Large Tee Splice



THERMON The Heat Tracing Specialists®



Corporate Headquarters: 100 Thermon Dr • PO Box 609 San Marcos, • TX 78667-0609 • Phone: 512-396-5801 • 1-800-820-4328
For the Thermon office nearest you visit us at . . . www.thermon.com



PRODUCT SPECIFICATIONS

Terminator™ / FAK Termination Kits

FOR TUBETRACE® ELECTRICALLY HEATED TUBING

HEATER TERMINATION AND POWER CONNECTION KITS

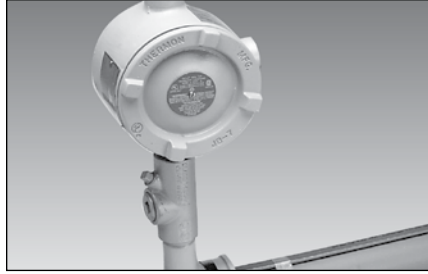


PCA is designed to fabricate power connections, in-line/T-splice connections or for making end terminations.

The PCA kit includes; NEMA 4X junction box, pipe-mounted expediter, 2 stainless steel pipe attachment bands for piping 10" or less.

PCA-HBSX, HTSX, KSX, HPT, FP
PCA-V RSX, TSX, VSX

TracePlus™ nonmetallic accessories are approved for ordinary and Division 2 hazardous locations. The kits have a maximum service temperature rating of 400°F (204°C).

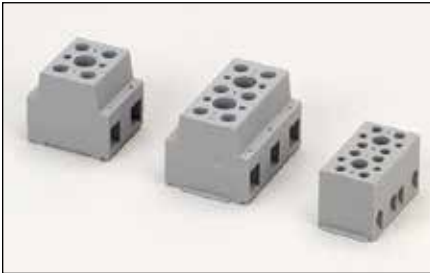


D1-ECK kit is required for power connection and heating cable termination in Class I, Division 1 hazardous (classified) areas. D1-ECK-2 kits for in-line splices and D1-ECT kits for T-splices are also available.

If the D1 cable terminations and/or splices are located more than 1' (305 mm) outside the Division 1 hazardous area, Division 2 approved termination kits may be used.



18SXG For connecting SX self-regulating heating cables to junction boxes, 3/4" NPT.



TB-2F, TB-3F, TB-4F floating terminal blocks for use inside metallic (ECA, ECT) and non-metallic (PCA, PCS) junction boxes.

TB-2F ...2-point and rated for 65A @ 600 Vac

TB-3F ...3-point and rated for 65A @ 600 Vac

TB-4F ...4-point and rated for 30A @ 250 Vac

Note

1. All Termination, Power Connection, and Splice kits are approved for appropriate area classifications with SX self-regulating, HPT power-limiting or other Thermon electrical heat tracing. As with all other electrical heat tracing, ensure that all electrical codes are referenced in regards to power distribution and circuit protection.

A complete selection of controls and monitoring systems are available for TubeTrace Type SE/ME electrically heated tubing. This includes mechanical thermostats and microprocessor-based TC control systems for every application, whether for freeze protection or accurate tube sensing control.

For additional information on these and other electrical heat tracing products and accessories visit www.thermon.com.

SPLICE KITS FOR ELECTRICAL HEAT TRACING



BBSK and TBSK is an under-insulation splice kit for use in ordinary and hazardous (classified) areas. This kit may be used with all SX self-regulating heating cables.



HPSK is an under-insulation splice kit for use in ordinary and hazardous (classified) areas. This kit may be used with all HPT power-limiting heating cables.